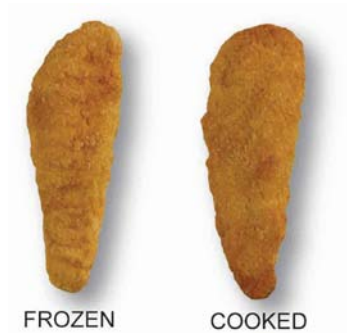


Code 6214



Breaded Tenderloin Shaped Chicken Patties

Ingredients: Chicken, Dried Whole Egg Solids, Water, Seasoning Salt [Salt, Flavor, Modified Corn Starch], Sodium Phosphates. BATTERED AND PREDUSTED WITH: Water, Enriched Bleached Wheat Flour (Enriched with Niacin, Ferrous Sulfate, Thiamine Mononitrate, Riboflavin, Folic Acid), Modified Corn Starch, Salt, Spices, Dextrose, Dried Garlic, Paprika and Annatto, Xanthan Gum, Natural Flavor. BREADED WITH: Enriched Bleached Wheat Flour (Enriched with Niacin, Ferrous Sulfate, Thiamine Mononitrate, Riboflavin, Folic Acid), Enriched Wheat Flour (Enriched with Niacin, Ferrous Sulfate, Thiamine Mononitrate, Riboflavin, Folic Acid), Salt, Spices, Soybean Oil, Paprika and Annatto, Extractives of Paprika. Breeding set in Vegetable Oil.

Contains: Egg, Milk, Soy, and Wheat

CN Specifications: CN label to provide 2 ounces meat/meat alternative and 1 bread serving. 141 / 4 piece portions per case

Nutrient

Per Svg 4 Pieces (97g)

Calories (kcal) 201

Fat (g) 11

Saturated Fat (g) 2

Trans Fatty Acid (g) 0

Cholesterol (mg) 44

Carbohydrates (g) 14

Dietary Fiber (g) 1

Total Sugars (g) 1

Protein (g) 15

Vitamins

Vitamin A - IU (IU) 177

Vitamin C (mg) 1

Vitamin B1 - Thiamin (mg) 0

Vitamin B2 - Riboflavin (mg) 0

Vitamin B3 - Niacin (mg) 6

Minerals

Sodium (mg) 523

Calcium (mg) 26

Iron (mg) 2